

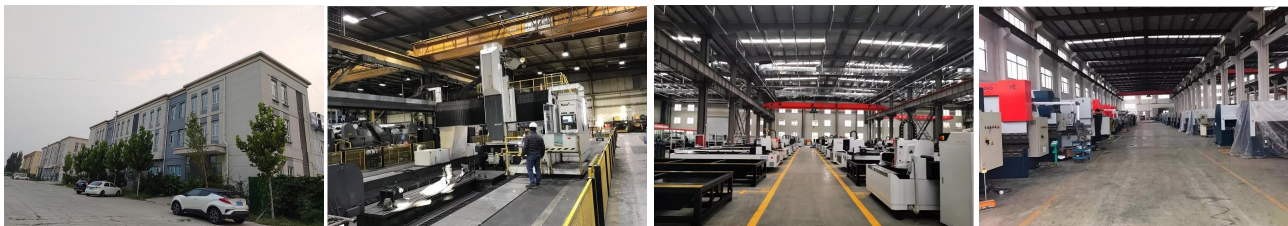


**Hebei CMA Machinery Co.,Ltd**  
 Add: No. 96, Liucun Street, Economic Development Zone,  
 Xingtai, Hebei, China 054000  
 Tel: +86 319 8871696 Mobile: +86 17320846975  
 E-mail: info@cmachinetools.com  
 Website: www.cmachinetools.com

**CMA MACHINERY**

WWW.CMACHINETOOLS.COM

**We are ISO 9001:2015 Certified Company**



Hebei CMA Machinery Co.,Ltd is the manufacturer of metalworking machinery in China.

The company has over 10 years' experience in the sheet metal processing and forming industry.

Our machines were made in strict accordance with the ISO and CE standards and sold to more than 30 countries and regions.

We will continue to provide quality machines with good service for customers all over the world.

**PART I CNC FIBER LASER CUTTING MACHINE**

**Single Table Laser Cutting Machine**



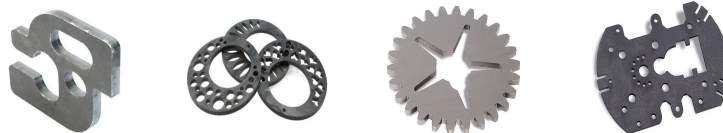
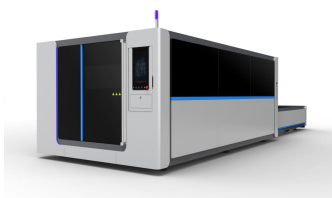
**Main Features**

1. Moving gantry beam adopts new structural design as well as new manufacturing process, which kept stability under high acceleration and made the extrusion aluminum alloy with big length-width.
2. CNC system written with human-computer interaction interface which adopt Chinese & English control software, made the operation more simple and convenient.
3. The cutting area with wide vision as there are three open sides, which make more easier to load and unload raw materials. It can be applied in different space.
4. Partitional structure used in electric control cabinet can meet various spatial arrangement.
5. Cutting chamber adopts moving grid to accurately realize endless cutting and save both material and cutting time.
6. Dust-removal structure on base part become more efficiency as the attached device made tuyere very close to cutting area. This also made dust-removal device avoid laser to ensure a long work life.
7. This special designed laser cutting head could do high-efficiency cutting to material in a particular thickness through the adjustment of focal distance, focus diameter and beam-waist cutting area, strong power, load material both front and back, all do good to save time.

**Technical Parameters**

Machine Model	CM-3015A	CM-4015A	CM-4020A	CM-6015A	CM-6020A	CM-8020A	Customized
Cutting Range (mm)	1500X3000	1500X4000	2000X4000	1500X6000	2000X6000	2000X8000	Machine model, cutting size, laser source, laser power etc. are customized
X Axis Stroke (mm)	1525	1525	2025	1525	2025	2025	
Y Axis Stroke (mm)	3050	4050	4050	6050	6050	8050	
Z Axis Stroke (mm)	100	100	100	100	100	100	
X/Y Axis Positioning Accuracy (mm)	±0.03	±0.03	±0.03	±0.03	±0.03	±0.03	
Re-position Accuracy (mm)	±0.02	±0.02	±0.02	±0.02	±0.02	±0.02	
Laser Power (w)	1000W-30000W						

### Exchange Table Laser Cutting Machine



#### Main Features

- 1.Integral gantry structure, dual AC Servo motor high speed synchronization system.
- 2.Light high-rigidity aluminum alloy beam and Z axis slide carriage ensured great dynamic performance.
- 3.Professional CNC laser cutting system.
- 4.High accuracy, speed and stability bring by Germany precision linear guide, reduction box and helical great transmission system,
- 5.Lubricating in concentration and dust removing in partition to make sure the machine operates stably in long time.
- 6.Mechanical high speed dual exchange table.
- 7.Zoom perforation function.
- 8.Cutting quality is optional in intelligent control system.
- 9.Integrated structure design covers a smaller area.

#### Technical Pameters

Machine Model	CM-3015W	CM-4020W	CM-6020W	CM-6025W	CM-8020W	Customized
Cutting Range (mm)	1500X3000	2000X4000	2000X6000	2500X6000	2000x8000	Machine type, cutting size, laser source, laser power etc. are customized
X Axis Stroke (mm)	1525	2025	2025	2525	2025	
Y Axis Stroke (mm)	3050	4050	6050	6050	8050	
Z Axis Stroke (mm)	300	300	300	300	300	
XY Axis Positioning Accuracy (mm)	±0.03	±0.03	±0.03	±0.03	±0.03	
Re-position Accuracy (mm)	±0.03	±0.03	±0.03	±0.03	±0.03	
Maximum Acceleration (m/s <sup>2</sup> )	1.5	1.5	1.5	1.5	1.5	
Laser Power (w)	1000W-30000W					

### Tube Laser Cutting Machine



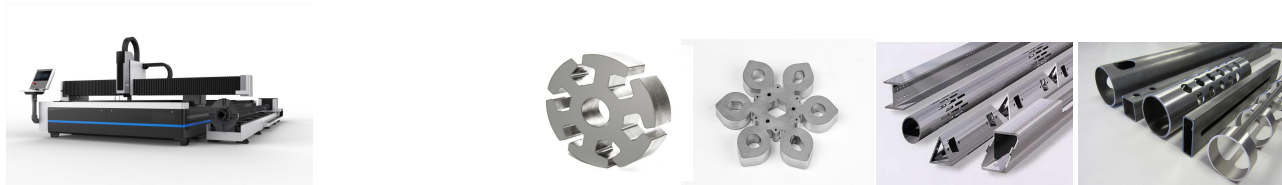
#### Main Features

1. It can cut lines and holes with different diameters from different directions on the pipe and meet centrifugal and non-centrifugal vertical intersection condition for branch and main pipe axis.
2. It can cut column crossed lines at the end of branch pipe, and meet centrifugal and non-centrifugal vertical intersection condition for branch and main pipe axis.
3. It can cut inclined section at the end section of the pipe.
4. It can cut branch pipe intersected with main circular pipe.
5. It can realize angle groove face, square hole, waist-shaped holes cutting.
6. Both round and square/retangular pipe/tube can be processed.

#### Technical Pameters

Machine Model	CM-3016Q/S	CM-3022Q/S	CM-6016Q/S	CM-6022Q/S	Customized
Cutting Diameter (mm)	≅ 220	≅ 220	≅ 220	≅ 220	Pipe cutting length/diameter, laser source, laser power etc. are customized
Cutting Length (mm)	3000	3000	6000	6000	
X/Y Axis Positioning Accuracy (mm)	±0.05	±0.05	±0.05	±0.05	
Re-position Accuracy (mm)	±0.03	±0.03	±0.03	±0.03	
Laser Power (w)	1000w-30000W				

### Plate and Tube Laser Cutting Machine



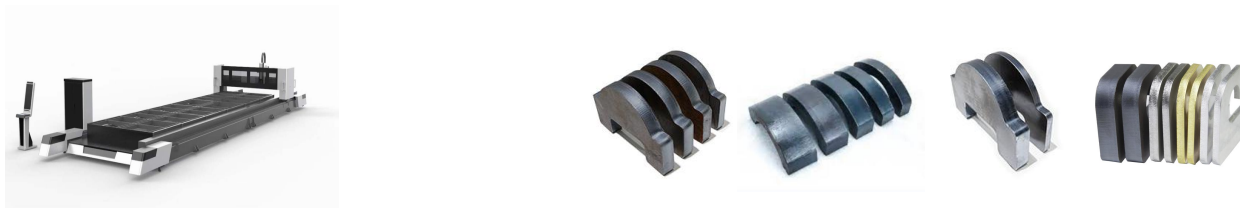
#### Main Features

1. Tube and plate laser cutting machine, Chuangli self-designed, saved lots of cost and spaces by cutting tube and plate in one machine.
2. Processing in wide range including tubes of different diameter and length.
3. Electric-drive motor in rotary device adjust speed freely. Easy-work, low noise, high rotary speed, high accuracy.
4. Intersecting line can be cut. Best choice for tubular construction.

#### Technical Pameters

Machine Model	CM-3015Q	CM-4015Q	CM-6015Q	CM-4020Q	CM-6020Q	Customized
Cutting Range (mm)	1500X3000	1500X4000	1500X6000	2000X4000	2000X6000	Tube length/diameter, laser source, laser power etc. are customized
Cutting Diameter(mm)	Φ20-450	Φ20-450	Φ20-450	Φ20-450	Φ20-450	
Tube Length(mm)	6000	6000	6000	6000	6000	
X/Y Axis Positioning Accuracy (mm)	±0.03	±0.03	±0.03	±0.03	±0.03	
Re-position Accuracy (mm)	±0.02	±0.02	±0.02	±0.02	±0.02	
W Axis Positioning Accuracy (mm)	1.5	1.5	1.5	1.5	1.5	
Laser Power (w)	1000W-6000W					

### Gantry Type Laser Cutting Machine



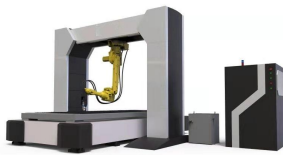
#### Main Features

1. Gantry type laser cutting machine is introduced by our company with many years of experience in R&D and production of gantry CNC cutting machine.
2. It is a high-power laser cutting machine for above 2000 watt large-format sheet cutting.
3. This model takes into account the large-format cutting and cost.
4. With high protection level, it can adapt to a variety of harsh production environments, with long-term stable operation, is a cost-effective large-format high-power laser cutting equipment.

#### Technical Pameters

Machine Model	CM-G3000	CF-M4000	CF-M5000	Customized
Cutting Range (mm)	3000X8000/12000/16000	4000X8000/12000/16000	5000X8000/12000/16000	Machine type, cutting size, laser source, laser power etc. are customized
Z axis range (mm)	150	150	150	
X/Y Axis Positioning Accuracy (mm)	±0.03	±0.03	±0.03	
Re-position Accuracy (mm)	±0.02	±0.02	±0.02	
Laser Power (w)	3000W-30000W			

### 3D Laser Cutting Robot



### Main Features

1. Adpot automatic robot motion technology, equipped with high precision laser head stable output power, can process large working area;
2. It can cut different thickness of metallic materials like metal plate, stainless steel, aluminum, brass, copper and so on;
3. Simplify the operation by equipping with off-line programming software.

### Technical Parameters

Machine Model	CM-RB1400	CM-RB1800	Customized
Cutting Range (mm)	≅ 1400	≅ 1800	Machine type, cutting size, laser source, laser power etc. are customized
XY Axis Positioning Accuracy (mm)	±0.03	±0.03	
Re-position Accuracy (mm)	±0.02	±0.02	
Laser Power (w)	1000w-3000w		

Fiber Laser Cutting Machine Cutting Parameter Table

Material	Thickness (mm)	Gas Type	500w	750w	1000w	1500kw	2000w	3000w	3300w	4000w	6000w
			Speed (m/min)	Speed (m/min)	Speed (m/min)	Speed (m/min)	Speed (m/min)	Speed (m/min)	Speed (m/min)	Speed (m/min)	Speed (m/min)
stainless steel	1	N <sub>2</sub>	10~12	16~20	20~24	28~32	38	50	80	42~43	70~75
	2	N <sub>2</sub>	2	4.5	5.4	7.5	12	13	30	19~20	25~30
	3	N <sub>2</sub>	0.7	1.7	2.2	4	7	8	13	11~12	12~15
	4	N <sub>2</sub>			1.2	2	4	5	8	6.5~7.5	7.5~9
	5	N <sub>2</sub>				1.1	2	2.5	6	4~5	6~7.5
	6	N <sub>2</sub>				0.8	1.5	1.5	4	2~3	5~6.5
	8	N <sub>2</sub>					0.8	1	25	1.5~2	3.5~4.5
	10	N <sub>2</sub>					0.5	0.8	18	1	2.1
carbon steel	14							0.5		0.8	1.1
	1	Air	8~9	7~10	9~12	27~30	27~30	50	50	43	70~75
	2	Air	4~5	5~6	6~8	8~10	10~12	13	13	20	25~30
	3	O <sub>2</sub>	2	2.3	3	3	3	4.5	4.5	4.5	4.5
	4	O <sub>2</sub>	1.5	1.8	2	2.5	3.1	3.5	3.5	3.8	3.8
	5	O <sub>2</sub>	1.2	1.5	1.6	2	2.5~3	3	3	3.5	3.7
	6	O <sub>2</sub>	0.9	1.3	1.4	1.8	2.2	2.5	2.5	2.8	3.3
	8	O <sub>2</sub>		1	1.1	1.3	1.5	2	2	2.3	2.8
	10	O <sub>2</sub>		0.6	0.9	1.1	1	1.4	1.4	1.8	2.1
	12	O <sub>2</sub>			0.7	0.9	0.8	1.1	1.1	1.5	1.6
	14	O <sub>2</sub>				0.6	0.7	0.9	0.9	1	0.95
	16	O <sub>2</sub>				0.5	0.6	0.8	0.8	0.9	0.85
	18	O <sub>2</sub>					0.5	0.7	0.7	0.8	0.75
	20	O <sub>2</sub>					0.4	0.6	0.6	0.7	0.65
22	O <sub>2</sub>						0.5	0.5	0.5	0.5	
Aluminum	1	Air	7~8	10	12~13	15	17~18	45	45	35~37	70~75
	2	Air	1.5~2	3	4~4.5	6	7.5	11	11	15	25~30
	3	Air		0.8	1~1.5	3	5	7	7	8~9	15
	4	Air				0.8~1	2	4	4	6	10
	5	Air						1.5	1.5	3	8
	6	Air						1	1	2	5.5
	8	Air						0.5	0.5	1	2.5
brass	10	Air								0.5	1.3
	1	Air	5	8	10	12	15	40	40	30~33	65~70
	2	Air	1	2	3	5	6	10	10	13	20~25
	3	Air			0.5	2	3	4	4	7	5
	4	Air				0.5	1.5	3	3	5	4
	5	Air					0.5	1.5	1.5	2	3
	6	Air						0.8	0.8	1.5	2
8	Air								0.8	1.2	
10	Air									0.5	

Parameters above is only for your reference, not the maximum. There'll be changes during the operation.

## PART II: CNC PLASMA AND FLAME CUTTING MACHINES

### Gantry Type CNC Cutting Machine



#### Main Features

It can be equipped with flame or plasma cutting torches. Equipped with the world top servo system, deceleration system, high-precision driving racks and guideway, the machine has superior cutting quality.

#### Technical Parameters

Parameter and specification	4000mm	5000mm	6000mm	7000mm	8000mm	Customized
Effective cutting width	3200mm	4200mm	5200mm	6200mm	7200mm	
Effective cutting length	rail length reduce 2 m					Cutting size, plasma power supply and cnc control system etc. are customized.
Working rail length	according to customer's request					
Driving method	bilateral drive					
Machine tool unload speed	0-12000mm/min bilateral drive					
Cutting speed	100-750mm/min flame cutting (according to cutting process)					
	100-3000mm/min plasma cutting (according to cutting process)					
Cutting thickness	flame cutting 6-150mm					
	Plasma cutting, confirming thickness according to its power source					
Cutting torch quantity	according to request					
Range of cutting torch lifting	200mm or according to thickness of steel plate and situation of time					
Standard machine tool working	according to ISO9013-2002					

### CNC Plate and Tube Cutting Machine



#### Main Features

CNC Metal Sheet and Pipe Cutting Machine has high speed and high quality cutting for medium and thin ferrous sheet, stainless steel, aluminum and carbon steel sheets. This machine can cut both metal sheet and round/square/rectangular pipes.

#### Technical Parameters

Machine Specification	Driving model	Gauge length	Rail length	pipe length	pipe diameter	torch number	Travel speed
Technical Parameter	Bilateral drive	3m, 4m, 5m	4m, 5m, 6m etc.	as customized	20-100mm/ customized	as customized	12m/min
Customized	Cutting size, plasma power supply, cnc control system etc. are customized.						



## CNC Tube Cutting Machine



### Main Features

Round/Square Pipe CNC Plasma Cutting Machine has high cutting precision and good cutting surface. It can cut, perforate and groove cutting on kinds of shapes pipeline like rectangle, cone, poly-rowed, oval etc.

### Technical Parameters

Tube diameter	≤300mm	≤500mm	Customized
Tube length	≤6000mm	≤6000mm	
Cutting thickness	flame cutting 6-150mm or larger; plasma cutting according to power supply		Cutting size and plasma power supply etc. are customized
Cutting speed	100-750mm/min flame cutting (according to cutting process)		

## CNC Portable Cutting Machine



### Main Features

Portable CNC Cutting Machine has cantilevered structure, light weight. With compact structure, it covers small area, moves fast, installs and operates simply. It can be equipped with flame or plasma cutting device. Cutting precision ensured by rail which made of imported hard aluminum alloy without deforming in a long term. The system has electric height-controller and plasma cutting connector. Professional nesting software makes faster and better nesting as well as saves more material.

### Technical Parameters

Cutting width	1500mm	2000mm	Customized
Cutting length	3000mm	4000mm	
Cutting thickness	flame cutting 6-150mm or larger; plasma cutting according to power supply		Cutting size and plasma power supply etc. are customized
Cutting speed	100-750mm/min flame cutting (according to cutting process)		

## PART III: PRESS BRAKE AND SHEARING MACHINES



### Machine Features

The electro-hydraulic servo proportional valve of Germany BOSCH company is used to ensure the synchronization of the machine. It has high operation longitudinal force continuous action, energy saving and consumption reduction novel design, and is equipped with LED lighting. At the same time, the working noise is greatly reduced.

### Machine Specifications

Machine model	Bending Capacity	Max Bedding Length	Distance Between Frames	Throat Depth	Cylinder Stroke	Day Light Opening	Die Setting Height	Main Motor	Oil Volume	Fast Approach	Bending Speed	Return Speed	Length	Width	Height	Weight
	TONS	MM	MM	MM	MM	MM	MM	KW	LITERS	MM/SEC	MM/SEC	MM/SEC	MM	MM	MM	kg
S0T2000	50T	2000	1700	300	160	420	470	5.5	190	200	17	180	2300	1500	2270	4500
70T2500	70T	2500	1200	300	160	420	470	7.5	230	200	13	160	2800	1500	2270	4900
100T3200	100T	3200	2900	400	200	435	530	7.5	300	180	10	132	3500	1650	2660	8700
130T3200	130T	3200	2900	400	200	455	550	11	300	180	10	132	3500	1650	2660	8700
170T3200	170T	3200	2700	400	200	435	530	11	300	150	10	135	3500	1700	2660	9500
170T4000	170T	4000	3500	400	200	435	530	11	340	150	10	135	4300	1700	2660	12000
170T6000	170T	6000	5000	400	200	435	530	15	340	150	10	135	6300	1700	3100	19000
200T3200	200T	3200	2700	400	200	425	520	15	300	120	10	135	3500	1800	2760	12000
200T4000	200T	4000	3500	400	200	425	520	15	300	120	10	135	4300	1800	2760	13000
200T6000	200T	6000	5000	400	200	425	520	15	300	120	10	85	6300	1850	2860	22000
250T3200	250T	3200	2700	400	250	525	600	18.5	400	100	10	120	3500	1920	2960	13500
250T4000	250T	4000	3500	400	250	525	600	18.5	400	100	10	120	4300	1920	2960	15500
250T6000	250T	6000	5000	400	250	525	600	18.5	400	100	10	75	6300	2000	3330	24000
320T4000	320T	4000	3500	400	300	525	600	22	400	100	10	120	4300	2050	3100	22000
320T6000	320T	6000	5000	400	300	525	600	22	400	100	10	75	6300	2130	3330	30000



### Machine Features

Shears are manufactured to the highest standard with strict quality control to achieve a long life to minimum maintenance.

The frame consists of heavy duty, solid welded steel structure giving maximum rigidity and performance. Standard controls comprise of electro-hydraulic operated variable rake angle, motorised front operated backgauge and inching mode for up-stroke and down stroking.

4 edge high carbon high chrome D2 quality shear blades. Independent clamping of hold downs, squaring ar, with disappering stops.

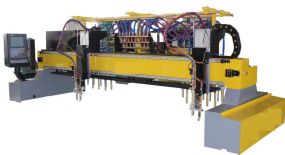
### Machine Specifications

Machine Model	Thickness of shearing plate (mm)	Width of shearing plate (mm)	Shearing angle adjustment	Back barrier stroke (mm)	Main Motor (KW)	Weight (KG)	Dimension (mm)
CM-RAS256	6	2500	1-3°	750	7.5	5000	3140*1740*2040
CM-RAS326	6	3200	1-3°	750	7.5	6000	3750*1770*2150
CM-RAS406	6	4000	1-3°	750	7.5	9500	4830*1840*2100
CM-RASS06	6	5000	1-3°	750	7.5	11000	5680*2150*2280
CM-RAS606	6	6000	1-3°	750	75	14000	6680*2150*2300
CM-RAS258	8	2500	1-3°	750	11	5500	3140*1740*2040

CM-RAS328	8	3200	1-3°	750	11	6500	3750*1770*2150
CM-RAS408	8	4000	1-3°	750	11	9500	4830*1840*2100
CM-RAS508	8	5000	1-3°	750	11	13000	5680*2150*2280
CM-RAS608	8	6000	1-3°	750	11	16000	6680*2150*2300
CM-RAS2510	10	2500	1-3°	750	11	6500	3245*1830*2390
CM-RAS3210	10	3200	1-3°	750	15	8000	3855*1830*2390
CM-RAS4010	10	4000	1-3°	750	15	11000	4830*1830*2390
CM-RAS2513	13	2500	1-3°	750	18.5	7000	3285*1830*2390
CM-RAS3213	13	3200	1-3°	1000	18.5	9500	3855*1830*2390
CM-RAS4013	13	4000	1-3°	1000	22	15000	4855*1830*2390
CM-RAS6013	13	6000	1-3°	1000	22	24000	6800*2330*2680
CM-RAS2516	16	2500	1-3°	1000	22	13000	3440*1940*2830
CM-RAS3216	16	3200	1-3°	1000	30	15000	4010*1940*2830
CM-RAS4016	16	4000	1-3°	1000	30	18000	5010*1980*2830
CM-RAS6016	16	6000	1-3°	1000	30	32000	6800*2350*2900
CM-RAS2520	20	2500	1-3°	1000	37	17000	3440*1980*2830
CM-RAS3220	20	3200	1-3°	1000	37	20000	4010*1980*2830
CM-RAS4020	20	4000	1-3°	1000	37	24000	5010*1980*2830
CM-RAS6020	20	6000	1-3°	1000	37	50000	6800*2850*3200

## PART IV: H-BEAM STEEL PRODUCTION LINE MACHINES

### H Beam Multi-torch CNC Cutting Machine



#### Main Features

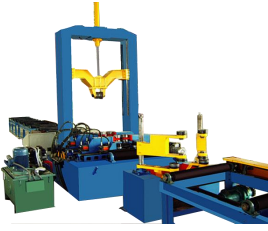
It can cut work-piece and longitudinal straight sheet respectively. It is the perfect combination of CNC control, precision mechanical transmission and gas cutting, which is an efficient, high precision and high precision and high reliability thermal cutting equipment.

#### Technical Parameters

Machine Model	CM/Z-4000	Cutting thickness	6-100mm	Customized
Rail span	4000mm	Longitudinal cutting torch	9 or as customized	
Rail length	15000mm or as customized	Horizontal cutting torch	2 or as customized	Cutting size, plasma power supply and cnc control system etc. are customized.
Effective length	13000mm or as customized	Cutting torch lifting	200mm	
Cutting width	80-3200mm or as customized	Repetition precision	±0.5mm	
Cutting speed	50-1000mm/min	Cutting gas	O2, acetylene, propane	
Max speed	4000mm/min	Machine power	1.5kw	



## H Beam Hydraulic Assembly Machine



### Main Features

On the assembly machine, one side is the turbine rod drive mechanical alignment, while the other side is hydraulic clamping. Good balance ensured by pressing material with two guiding wheels. Hydraulic system can fit low temperature with hydraulic oil filtration function and automatic heating function.

### Technical Parameters

Flange width	200-1000mm	Web height	200-3000mm
Flange thickness	6-80mm	Web thickness	6-70mm
Flange length	6-15m	Web length	6-15m
Assembly speed	0.65-6.5mm/min	Assembly speed	0.65-6.5mm/min
Machine power	single machine 11kw (Do not include welding machine), connect with H-beam production line 16.5kw		

## H Beam Gantry Welding Machine



### Main Features

With frequency converter, the welding car has a stable speed. 3 axis tracking arc part and two side's floating tracking ensured welding gun focus on the seam. The arc device can do bi-direction welding which save the return time.

### Technical Parameters

Model	MH1000/1250×2	Driving mode	Bilateral
Web height	200-1500mm	Rail length	18000mm
Gauge	4000mm	Welding speed	250-1200mm/min
Welding position	fillet welding in the flat position	Power	11kw

## H Beam Flange Straightening Machine



### Main Features

The machine is applicable to straighten the H-Beam steel sheet flange after welding. With advanced heat treatment, straightening rolls made of superior alloy steels can avoid cracks.

### Technical Parameters

Model	HYJ-40	YJZ60B	YJZ80B	YJZ60A
Flange width	200-800mm	180-800mm	200-1000mm	200-1000mm
Flange thickness	6-40mm	≦ 60mm	≦ 80mm	≦ 40mm(Q345); ≦ 60mm(Q235)
Min height of web	200mm	350mm	350mm	350mm
Material	Q235	Q345(16Mn)	Q345(16Mn)	Q345/Q235
Speed	≈13300mm/min	6.15m/min	6.56m/min	6.15m/min
Gross power	14kw	37kw	28kw	27.5kw

### H Beam Assembly Welding and Straightening Machine



#### Main Features

One machine can do the 3 sets of machines job (assemble, welding and straightening machines), which greatly enhance production efficiency of factory. This machine saves labor cost, take less space and enhance factory productivity.

#### You may also find us by:



<https://www.youtube.com/channel/UC1giZRBiluQUu-nduLUCFOA>



<https://www.facebook.com/profile.php?id=100085947621281>



[https://twitter.com/cma\\_machinery](https://twitter.com/cma_machinery)

### Hebei CMA Machinery Co.,Ltd

**Add:** No. 96, Liucun Street, Economic Development Zone, Xingtai, Hebei, China 054000

**Tel:** +86 319 8871626 **Mobile/Whatsapp:** +86 17320846975

**E-mail:** info@cmachinetools.com

**Website:** www.cmachinetools.com